



ZOTEFOAMS

# eco ZOTE<sup>®</sup>

Sustainability<sup>+</sup> foams

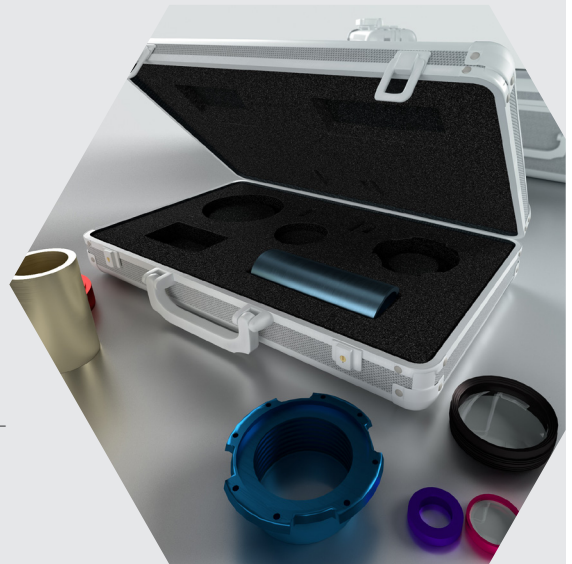
Ecozote<sup>®</sup> LDR  
with 30%  
recycled  
content

Product  
protection  
designed for  
sustainability



# eco ZOTE<sup>®</sup>

Sustainability+ foams



**The new Ecozote<sup>®</sup> Sustainability+ foams range responds to the need for plastic products that improve circularity or reduce reliance on fossil fuel-derived raw materials.**

Building on the underlying sustainability credentials of Zotefoams materials – lightweight, durable and foamed using nitrogen borrowed from the atmosphere – Ecozote foams have product sustainability at the core of their design philosophy.

Ecozote LDR closed cell, crosslinked low-density polyethylene (LDPE) foams incorporate 30% recycled material, complying with emerging requirements for recycled content in product protection applications.

Currently two grades are available – LDR18 and LDR27. Characteristics include:

- 30% recycled content
- Lightweight and low-density - reducing fuel and transportation costs
- Consistent cell size ensuring physical performance is compatible with a wide range of forming methods
- Good energy-absorbing properties for excellent impact protection
- Manufactured using a unique nitrogen expansion process making pure, odourless and non-toxic foams

#### Size

**LDR18** 2000x1000x52mm Skin/Skin Sheet

**LDR27** 2000x1200x53mm Skin/Skin Sheet

Save costs and energy by reducing weight

Durable for repeat use

To request a sample or contact the sales team for any queries, please contact us at [ecozote@zotefoams.com](mailto:ecozote@zotefoams.com)  
[www.zotefoams.com/ecozote](http://www.zotefoams.com/ecozote)



Issue 1: 14.09.22